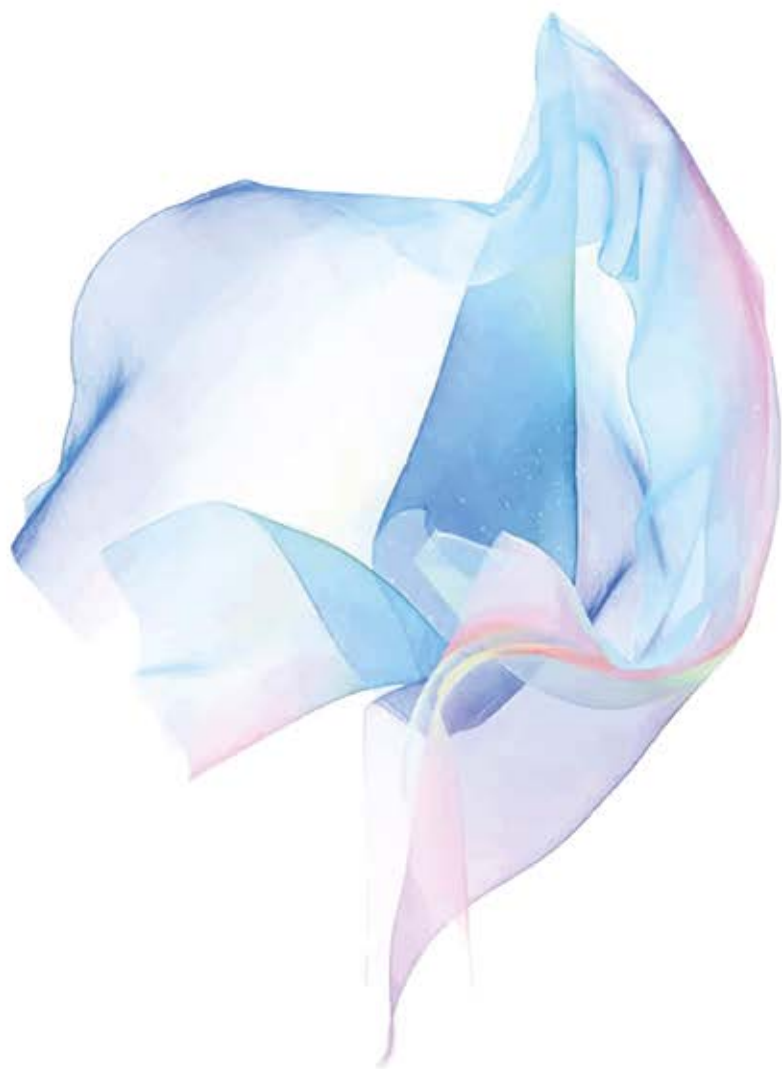


FILARTEX

YARNS EVERY WEAR



T E - A M O

TE - AMO

TE-AMO

85% COTONE ELS - 15% CASHMERE
 85% ELS COTTON - 15% CASHMERE

STOCK SERVICE:

NE 30/1 = NM 1/50; NE 30/2 = NM 2/50;
 NE 30/3 = NM 3/50; NE 46/2 = NM 2/78

ELITE

90% COTONE - 10% CASHMERE
 90% COTTON - 10% CASHMERE

TITOLI DISPONIBILI/COUNTS AVAILABLE:

NE 30/1 = NM 1/50; NE 30/2 = NM 2/50; NE 30/3 = NM 3/50

COLORI STOCK SERVICE * | STOCK SERVICE COLOURS *

DELUXE

95% COTONE - 5% CASHMERE
 95% COTTON - 5% CASHMERE

TITOLI DISPONIBILI | COUNTS AVAILABLE:

NE 30/1 = NM 1/50; NE 30/2 = NM 2/50; NE 30/3 = NM 3/50

COLORI STOCK SERVICE ▲ | STOCK SERVICE COLOURS ▲

SPLENDID

55% CASHMERE - 45% COTONE ELS
 55% CASHMERE - 45% ELS COTTON

TITOLI DISPONIBILI | COUNTS AVAILABLE:

NE 30 = NM 50; COLORI STOCK SERVICE * | STOCK SERVICE COLOURS *
 NE 46 = NM 78; COLORI STOCK SERVICE ** | STOCK SERVICE COLOURS **



46 BIANCO



TF GESSO C



AD PRATO S



D6 GRIGIO CHIARO C



5C AVENA M



7R RANA S



6X LAVA S



07 ECRU M



2L EMERALD S



SX TEMPORALE S



70 BISONTE S



6U FICO S



FU PIOMBO S



NH MARRONE S



76 GRIGIO VERDE S



P2 SAHARA C



PY ASTICE M



5P POWDER M



2E GIALLO BABY C



GV TRAMONTO S



NA SABINA C



RT SOLEIL S



S5 ROSSO VIVO S



PJ DALIA S



GD SPEZIA S



2G TERRACOTTA S



4M RUBINO S



RF RAMO S



4H CICLAMINO S



TW PLUM S



7N CERULEO S



H8 SALENTO M



4N BLU CINA S



7T ZAFFIRO S



HS ORATA M



64 BLU MARINE S



RV BLU EYES S



ZX RUGIADA M



4K BALTICO S



4J MAIOLICA S



HB ORIZZONTE S



59 BLU NERO S



43 VIOLA S



CT OTTANIO S



99 NERO S



4E BON BON S



7Y IGL00 S



1F JEANS S



VP CORAL S



VN LONDRA SS



8X ATLANTICO S



4L BOUQUET S



VM BROWN S



W6 INDIANO S



1G GREEN S



8W SPIGA S



F8 BLACK S



1E ZABAIONE S



7X PIUMA S



ZA NOIR S





FILARTEX spa

Via Firenze, 13 - I-25036 Palazzolo s/O (BS)
Tel. +39 030.7401612 - Fax +39 030.7401661
www.filartex.it

Italia: filati@filartex.it - Worldwide: yarns@filartex.it